

SPECIFICATIONS

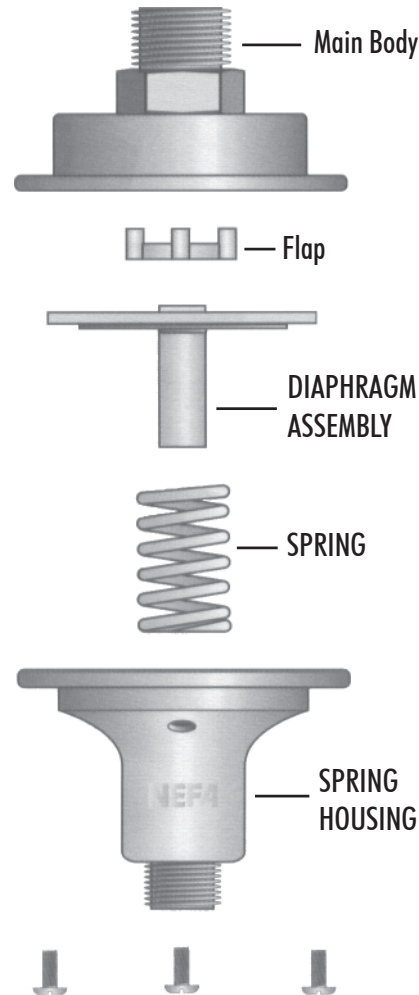
- Factory set at 3.7, 7.6 and 12.2 metre head.
- Conforms to NZS4608

INSTALLATION

- Valves should always be fitted by a qualified plumber according to BIA G12 or NZS 4607.
- Should only be installed on a thermostatically controlled hot water system (maximum heating capacity 8kw per valve).
- Must not be installed into wetback or solar systems.
- The relief valve should not be fitted more than 100mm below or 300mm above the top of the cylinder except in the following situation:
To increase the pressure of an existing installation, install a 3.7m Nefa Relief Valve onto the vent pipe not more than 3.7m above the bottom of the cylinder. Reset the Pressure Reducing Feed Valve as per setting instructions. Not suitable in areas prone to frosts, Refer to BAI G12 for alternative installation.
- The relief drain must not rise above the relief valve but should run at a down grade out to the atmosphere to a point where the outlet cannot be obstructed or blocked and where expansion, or other vented water will not cause a hazard or a nuisance and should not exceed 3m in length and include not more than three 90° bends.

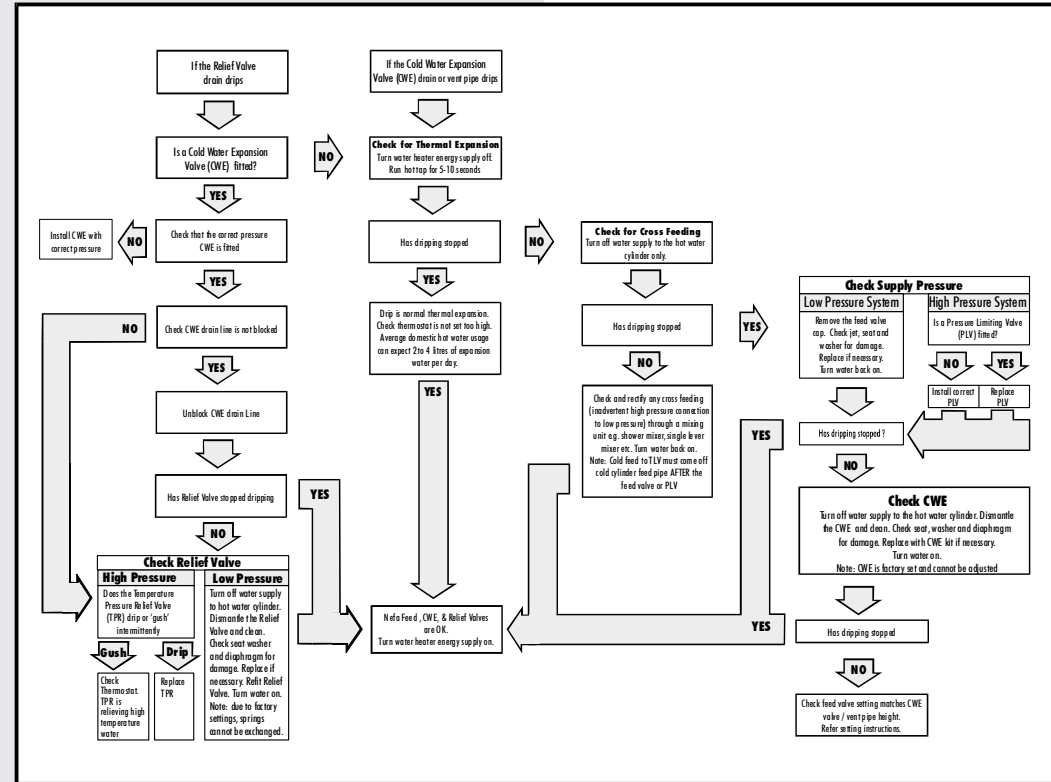
IMPORTANT

- When factory set, allowance is made for the relief valve to be fitted 1m above the feed valve. If they are installed level, undo the feed valve locknut and turn adjustment screw two turns out of body.
- When servicing relief valves always use original spring.
- When draining a hot water cylinder, the Nefa Relief Valve must be disconnected to ensure adequate air returns to the cylinder to prevent cylinder distortion.



TROUBLESHOOTING FOR

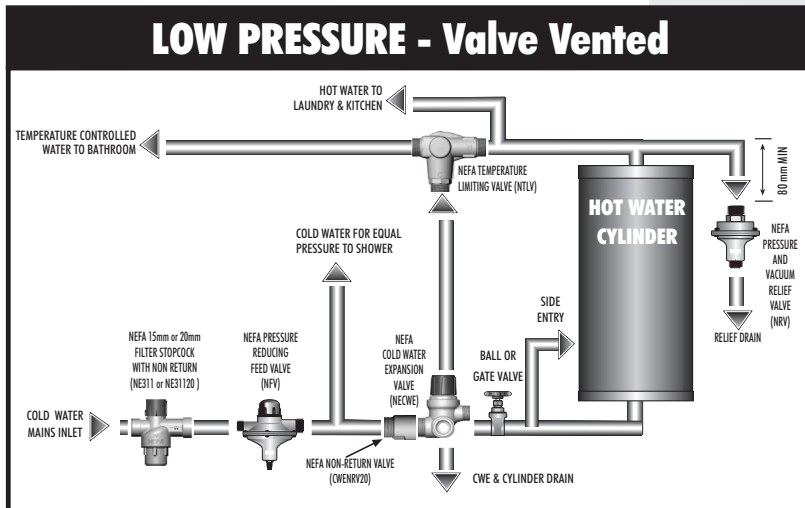
NEFA HOT WATER SYSTEMS



Diagrams for illustrative purposes only

SETTING INSTRUCTIONS

- Turn water heater energy supply off. Run hot tap for 5-10 seconds.
- Wind adjusting screw into feed valve until water is expelled freely through the Cold Water Expansion valve/vent pipe.
- Turn adjusting screw back slowly until the flow stops, then a further 1/2 - 3/4 turn to give the necessary pressure differential for operation.
- When draining a cylinder the relief valve must be disconnected to ensure adequate air return to the cylinder and so prevent cylinder collapse.



Diagrams for illustrative purposes only

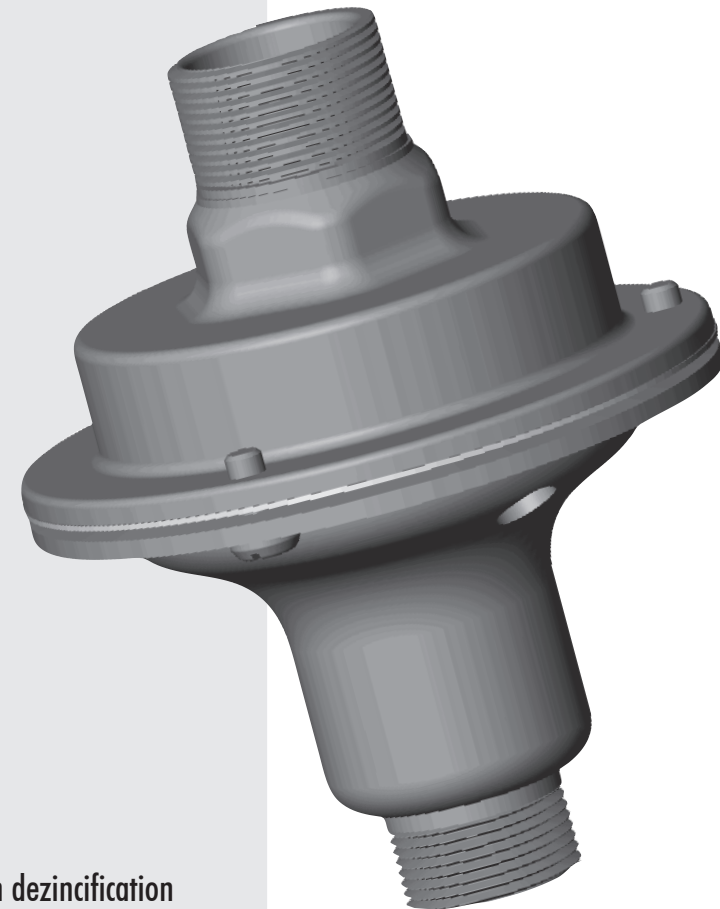
Warranty Statement

Where NEFA valving is purchased for use or on-sale in the context of any business, Methven Limited undertakes to either repair or replace (at its option) that valving, if it is discovered that such valving contains a material defect, which arose in the course of manufacture. This undertaking shall not apply if:

1. The defect is brought to Methven Limited's attention later than 5 years after the date of purchase.
Proof of purchase will be required.
2. There is a failure by any person to follow the installation instructions or the valving is used other than in accordance with the specifications.
3. Evidence cannot be produced which confirms that the relevant valving was purchased from a Methven Limited authorised distributor.
4. Repair work is performed on the relevant valving by a person other than Methven Limited, its authorised service agents or any plumber who has not received authorisation **prior** to proceeding with the work.

The date of manufacture is marked on the valve, represented by a five digit number. The first two digits refer to the **year** and the last three digits refer to the numerical day of the **year**.

The above undertaking from Methven shall also apply to any purchaser of NEFA valving who is a "Consumer" under the Consumer Guarantees Act 1993, in addition to any other right or remedy which such person may have under that Act. Methven shall in no way be liable to the purchaser or user of any tapware, for any loss, damage (direct, indirect or consequential), cost or expense suffered or incurred by that person, otherwise than as provided in the above provisions, or as provided under the Consumer Guarantees Act 1993.



- Forged in dezincification Resistant Brass (DR).
- Easy to service.
- Fully guaranteed under BIA regulations.
- Withstands boiling temperatures
- Integral vacuum break with the valve body.

PRESSURE

AND VACUUM

RELIEF VALVE



Made in New Zealand by Methven Limited,
Private Bag 19996, Avondale, Auckland, NZ.



For product assistance, technical and sales enquiries contact Methven Limited
Ph: 0800 804 222
Fax: 0800 805 222

Part No: 285003 ISS G